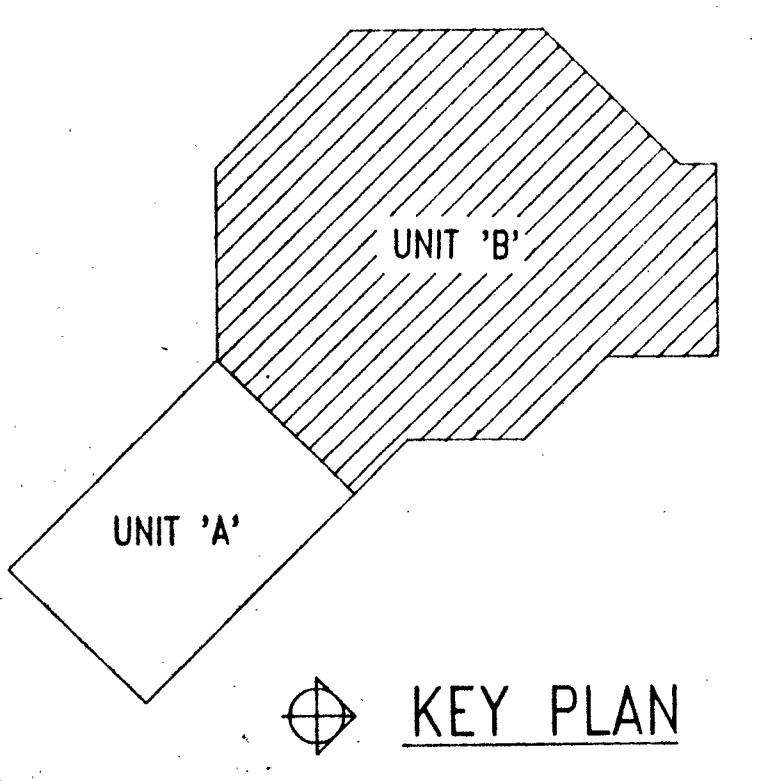
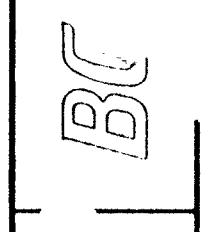


**BOILER ROOM PLAN**  
SCALE: 1/4" = 1'-0"

- GENERAL NOTES:**
1. ALL FLOOR BOXES AT GENERAL OFFICE #222 (MODULAR PARTITIONS) HAVE 3/4" C. (EMPTY) FOR TELEPHONE AND 1" C. (EMPTY) TO COMPUTER ROOM #219. (SEE DETAIL ON SHEET E-5).
  2. COORDINATE LOCATION OF FLOOR BOXES AT COUNCIL TABLE TO CONCEAL WITH-IN TABLE AREA AND NOT INTERFERE WITH SEATING AREA. (TABLE N.I.C.).
  3. JUNCTION BOX ABOVE CEILING WITH 1/2" C. (EMPTY) TO ACCESS DOOR JAMB FOR INTRUSION CONTACT SWITCH. (TYPICAL FOR ALL EXTERIOR DOORS).
  4. 24"x30" FLUSH BOX FOR TERMINATION OF DATA CONDUITS (EMPTY) FROM OFFICE AREAS. PROVIDE HINGED COVER (SIMILAR TO RECEPTACLE PANELS).
  5. LOCATE DATA / TELEPHONE JUNCTION BOX AT COUNTER IN BASE OF CASEWORK. COORDINATE WITH ARCHITECTURAL DETAIL FOR ACCESSIBILITY.
  6. DIVIDER WALLS HAVE ACCESS PANEL FOR INSTALLATION OF NORMAL POWER, ISOLATED GROUND RECEPTACLES AND TELEPHONE OUTLETS. ELECTRICAL CONTRACTOR SHALL INSTALL WITH-IN PARTITION AND HARD WIRE TO RESPECTIVE FLOOR / WALL BOXES. UTILIZE "SEALTITE" CONDUIT / FITTINGS.
  7. PROVIDE JUNCTION BOX FOR CONNECTION OF MOTORIZED PROJECTION SCREEN. (SCREEN BY OTHERS).
  8. 2" PVC CONDUIT FOR CCTV SERVICE. SEE SITE PLAN SHEET ME-1.



**FLOOR PLAN (UNIT "B") - POWER**  
SCALE: 1/8" = 1'-0"



ROY G. FRENCH ASSOCIATES, INC.  
2001 Eleventh Ave.  
15th Fl.

DATE	BY

CHESTERFIELD TOWNSHIP  
MUNICIPAL BUILDING  
MT. CLEMENS, MICHIGAN

SHEET TITLE  
FLOOR PLAN - POWER  
UNIT "B"  
8950  
E-3  
of 5