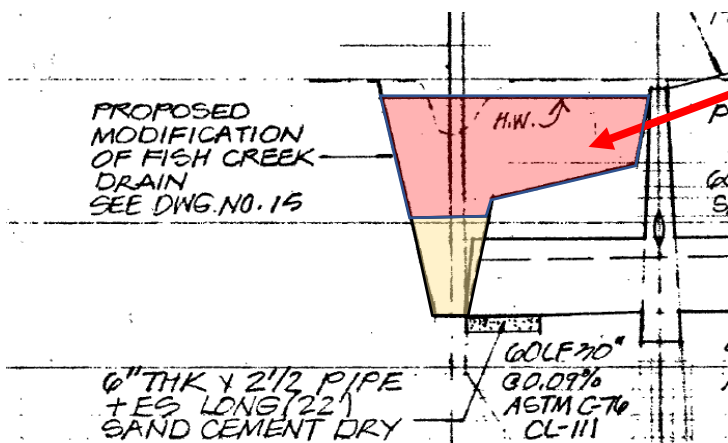




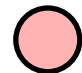

*Help combat pollution by keeping your drain easement and roadway ditches clean of debris and trash. Rain events and high water will cause the trash and debris to float downstream and lead to pollution. We all have a part to play in the protection of our waterways.*

*We are coordinating efforts with the Macomb County Public Works office at multiple County Drain locations throughout our Township.*

If your property includes a Macomb County drain easement your drain may experience higher than normal water levels. Many county drains are designed with a shelf to retain water during heavy rain or high water events.



*Macomb County Drain Easement – Drain Shelf Designed for Storm Water Retention during heavy rain / High Water Event.*

-  *Designed High Water Level*
-  *Typical Drain Level*

Macomb County Drain Information :

Macomb County Public Works – (586) 469-5325  
[www.macombgov.org/publicworks-home](http://www.macombgov.org/publicworks-home)  
Chesterfield Township DPW – (586) 949-0400  
[www.chesterfieldtwp.org](http://www.chesterfieldtwp.org)

