



# Manhole Inspection Form

## M1-7-2



Manhole Number	M1-7-2	Historic Manhole Number	Pinewood 2
Year Installed	1986	Structure Type	Sanitary Manhole
Street	Pinewood	Address	47303
Elevation	592.986	Weather	Partly Cloudy
Temperature	20°	Ground Condition	Dry
Status	At Surface Grade	Location	Yard Front
Pavment Condition	<null>	Traffic	No Traffic at Location
Inspector 1	Brs	Inspector 2	Kmd
Cover Type	Ej1040a	Number of Cover Holes	Solid Cover
Catch Basin Cover	<null>	Cover Insert	No
Cover Gasket	No	Cover Grade	Cover is At Grade
Grade Dist	5	Cover Fit	Good Fit
Cover Condition	Good	Frame Condition	Good
Frame Offset	<null>	Frame Seal Condition	Fair
Frame Seal Inflow	None	Frame Riser	No
Frame Riser Height	<null>	Frame Riser Material	N/A
Manhole Diameter	48	Manhole Depth	20.4
Chimney Depth	0.6	Chimney Construction	Precast
Chimney Condition	Good	Chimney Inflow	None
Cone Shape	Eccentric	Cone Depth	30
Cone Construction	Precast	Cone Condition	Fair
Cone Inflow	None	Cone Defect Location	<null>
Wall Construction	Precast	Wall Condition	Fair
Wall Inflow	None	Wall Defect Location	<null>
Wall Defect Location 2	<null>	Wall Defect Location 3	<null>
Wall Defect Location 4	<null>	Wall Defect Location 5	<null>
Bench Construction	Poured	Bench Condition	Fair
Bench Inflow	N/A	Channel Construction	Poured
Channel Condition	N/A	Channel Inflow	N/A
Channel Hydraulics	Good	Channel Exposure	Yes



# Manhole Inspection Form

## M1-7-2



Step Construction	Plastic	Step Condition	Fair
Surcharge Evidence	<null>		
Pipe 1 Flow	Inward Flow	Pipe 1 Diameter	12
Pipe 1 Direction	N	Pipe 1 Depth	20.4
Pipe 1 Material	Truss	Pipe 1 Seal Condition	N/A
Pipe 1 Drop	<null>	Pipe 1 Comments	<null>
Pipe 2 Flow	Outward Flow	Pipe 2 Diameter	12
Pipe 2 Direction	S	Pipe 2 Depth	20.25
Pipe 2 Material	Truss	Pipe 2 Seal Condition	N/A
Pipe 2 Drop	<null>	Pipe 2 Comments	<null>
Pipe 3 Flow	Inward Flow	Pipe 3 Diameter	6
Pipe 3 Direction	S	Pipe 3 Depth	8.45
Pipe 3 Material	PVC	Pipe 3 Seal Condition	N/A
Pipe 3 Drop	Interior	Pipe 3 Comments	T/pipe
Pipe 4 Flow	<null>	Pipe 4 Diameter	<null>
Pipe 4 Direction	<null>	Pipe 4 Depth	<null>
Pipe 4 Material	<null>	Pipe 4 Seal Condition	<null>
Pipe 4 Drop	<null>	Pipe 4 Comments	<null>
Pipe 5 Flow	<null>	Pipe 5 Diameter	<null>
Pipe 5 Direction	<null>	Pipe 5 Depth	<null>
Pipe 5 Material	<null>	Pipe 5 Seal Condition	<null>
Pipe 5 Drop	<null>	Pipe 5 Comments	<null>
Pipe 6 Flow	<null>	Pipe 6 Diameter	<null>
Pipe 6 Direction	<null>	Pipe 6 Depth	<null>
Pipe 6 Material	<null>	Pipe 6 Seal Condition	<null>
Pipe 6 Drop	<null>	Pipe 6 Comments	<null>
Recommendation 1	<null>	Recommendation 2	<null>
Recommendation 3	<null>	Recommendation 4	<null>
Recommendation 5	<null>	Recommendation 6	<null>



# Manhole Inspection Form

M1-7-2



Recommendation 7	<null>	Recommendation 8	<null>
Manhole Rating	2 – Failure unlikely in 20 years (Good)	Comments	Buried 5 inches deep



# Manhole Inspection Form

M1-7-2





# Manhole Inspection Form

M1-7-2

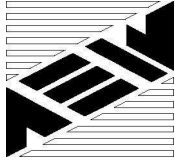




# Manhole Inspection Form

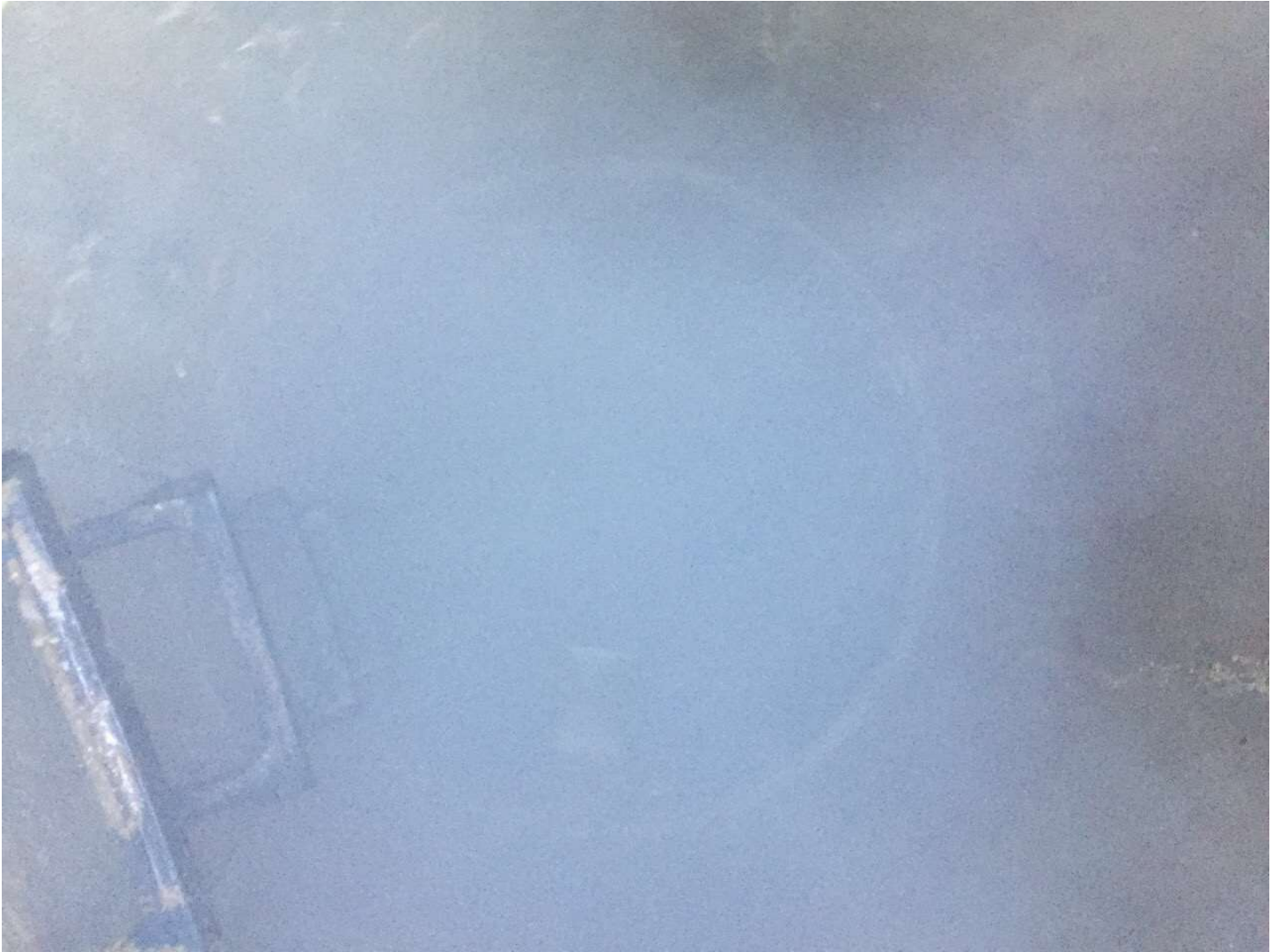
M1-7-2

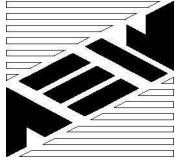




# Manhole Inspection Form

M1-7-2





# Manhole Inspection Form

M1-7-2



501 Schoenherr Road, Shelby Township, Michigan 48315  
Civil Engineers • Surveyors • Architects 586-726-1234

Page: 2

Date: 12/14/16

Address: 47303 pinewood

R.T. = 20.40'

D = 46"

Map: 52

12.25  
- 3.80  
8.45

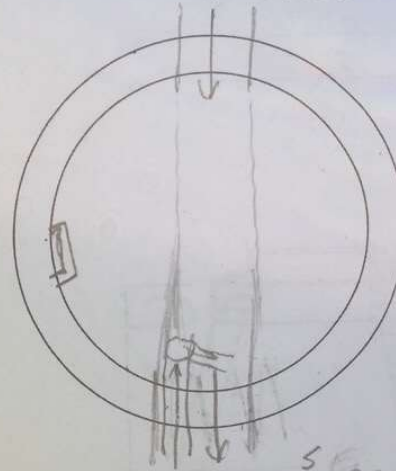


Manhole Number: M1-7-2

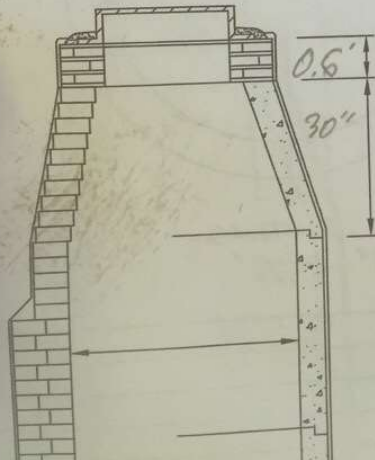
Community: Chesterfield

Inspector Initials: KMD / BRS

N Truss  
12" 20.40'



In+ 56" PVC  
Drop 6.45'  
S 20.25  
12" Truss



4/2016 7:00:25 AM